

**semiramis**  
*everywhere, anytime...*



**Quality people, quality services**  
*Everywhere, anytime*



**SC Semiramis SRL**

Bradu, Drum CET, nr. 63, Arges County, Romania, Phone: (0040) 248 222 464,  
Fax: (0040) 248 223 964, [www.semiramistrans.ro](http://www.semiramistrans.ro), office @ semiramistrans.ro

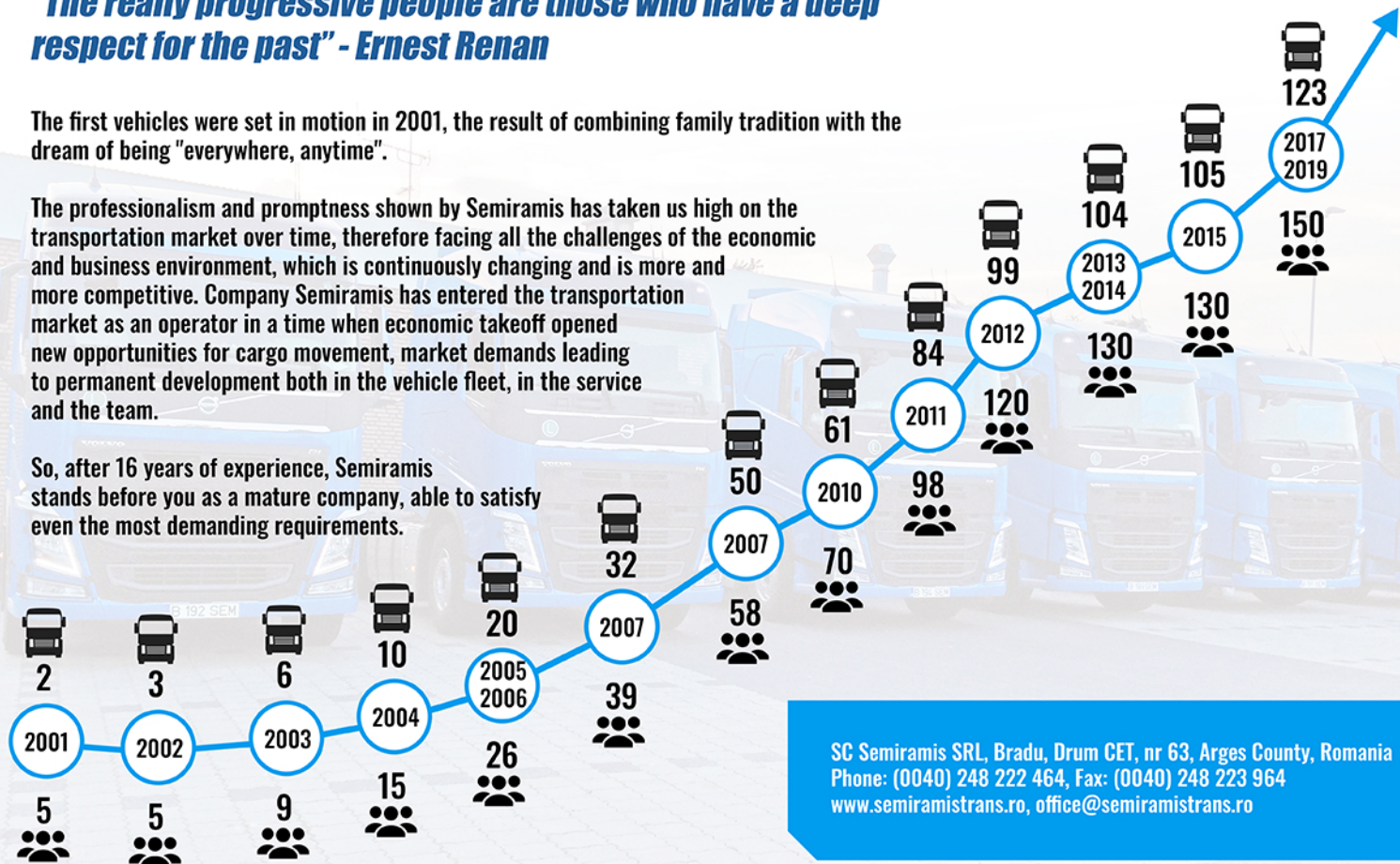
# The way our history began

*"The really progressive people are those who have a deep respect for the past" - Ernest Renan*

The first vehicles were set in motion in 2001, the result of combining family tradition with the dream of being "everywhere, anytime".

The professionalism and promptness shown by Semiramis has taken us high on the transportation market over time, therefore facing all the challenges of the economic and business environment, which is continuously changing and is more and more competitive. Company Semiramis has entered the transportation market as an operator in a time when economic takeoff opened new opportunities for cargo movement, market demands leading to permanent development both in the vehicle fleet, in the service and the team.

So, after 16 years of experience, Semiramis stands before you as a mature company, able to satisfy even the most demanding requirements.



SC Semiramis SRL, Bradu, Drum CET, nr 63, Arges County, Romania  
Phone: (0040) 248 222 464, Fax: (0040) 248 223 964  
[www.semiramistrans.ro](http://www.semiramistrans.ro), [office@semiramistrans.ro](mailto:office@semiramistrans.ro)





# An ever growing fleet

*We invest continuously in the development of our fleet to provide our partners and clients with the best transportation and environment protection conditions*



SEMIRAMIS's fleet consists of :

- 123 tractor unit, Volvo, Mercedes and DAF brand;
- 123 Krone, Schmitz semi-trailers and Rolfo trailers;
- 60 of these vehicle combinations have semi-trailers with tarpaulin, tautliner type, all of them comply with norms DIN EN 12642 code XL;
- 57 of the means of transportation are equipped with standard reefer semi-trailers. All reefer units with possibility to provide thermal chart;
- The safety of goods is ensured by equipping each reefer transportation mean with an additional locking system.
- 6 are vehicles transportation assemblies

By means of our partners' utility vehicle fleet, we may supply:

- Twenty 3.5 t vehicles;
- Ten 7.5 t vehicles.

We are also ready to supply FTL or LTL express transportation services, for smaller batches of goods.

The limit of the CMR insurance for the entire vehicle fleet sums up to EUR 1,500,000 including cabotage operations and clandestine risk.

# Served fields

***Solutions for every situation, for every field***

***Automotive***

***Tires industry***

***Pharmaceutical industry***

***Refrigerated and frozen products***

***Food industry***

***Metal industry***

***Household appliances industry***

***Agricultural products***

***Fabrics industry***

***Fashion industry***



## ***Special service***

**We are specialized in heavy equipment  
and vehicle transportation**

SC Semiramis SRL, Bradu, Drum CET, nr. 63, Arges County, Romania

Phone: (0040) 248 222 464, Fax: (0040) 248 223 964

[www.semiramistrans.ro](http://www.semiramistrans.ro), [office@semiramistrans.ro](mailto:office@semiramistrans.ro)



# Destinations

*Everywhere, anytime!*



Our routes take us everywhere in Europe,  
anytime our clients desire.

We are present on the following destinations:

*Germany, France, Great Britain, Italy, Spain, Portugal,  
Netherlands, Belgium, Luxembourg, Austria, Hungary,  
Bulgaria, Denmark, Sweden, Czech Republic*



SC Semiramis SRL, Bradu, Drum CET, nr. 63, Arges County, Romania  
Phone: (0040) 248 222 464, Fax: (0040) 248 223 964  
[www.semiramistrans.ro](http://www.semiramistrans.ro), [office@semiramistrans.ro](mailto:office@semiramistrans.ro)

## An effective management system

*"Times change and we change with them" - Ovidiu*

Semiramis knows that only by systematically meeting the needs and expectations of its clients and of other interested parties, on a long and balanced term, can one be truly successful.

In order to work effectively, we take the following into consideration:

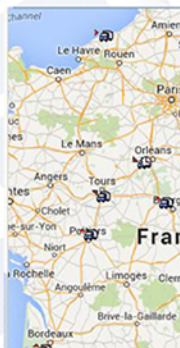
- vehicle fleet management;
- permanent tracking by GPRS and GSM devices;
- providing a cell phone for every driver;
- offering the possibility, for each client, to follow the dedicated fleet directly, in real time.

## Dynafleet, Fleetboard and Webeye systems

Dynfleet, Fleetboard and Webeye are the fleet's management systems, user friendly, made available by both of our tractors manufacturers.

## Wind system

The WIND system is an advanced planning system for operators in the field of transportation.



**Dynafleet Online**

Raport date generale referitoare la vehicul

[illegible]



## Quality people

***A powerful and experienced team stand at the basis of the company's development***

"To form a team is just the beginning, to stick together is progress, to work together is success" – these are Henry David Thoreau's words, inspiring and motivating us day after day to work better, in a more professional manner, to be anytime and everywhere by our customers' side, within an interactive system, providing them with fast solutions, tailored to each one's customized needs..

We think that the success of each company is given by working as a team, which is essential. Every member of our team has a very clearly defined role and is able to execute his duties with great efficiency.

SEMIRAMIS team is highly flexible, welcomes change and adapts to every challenge which may occur along the way.

Communication, professionalism, integrity and innovation are the common values building the personality of our team.

Our team's professionalism is assured by periodical and efficient training.



150  
people

# Recommended by our clients

*Always by the side of our customers*



SC Semiramis SRL, Bradu, Drum CET, nr. 63, Arges County, Romania, Phone: (0040) 248 222 464, Fax: (0040) 248 223 964  
www.semiramistrans.ro, office @semiramistrans.ro



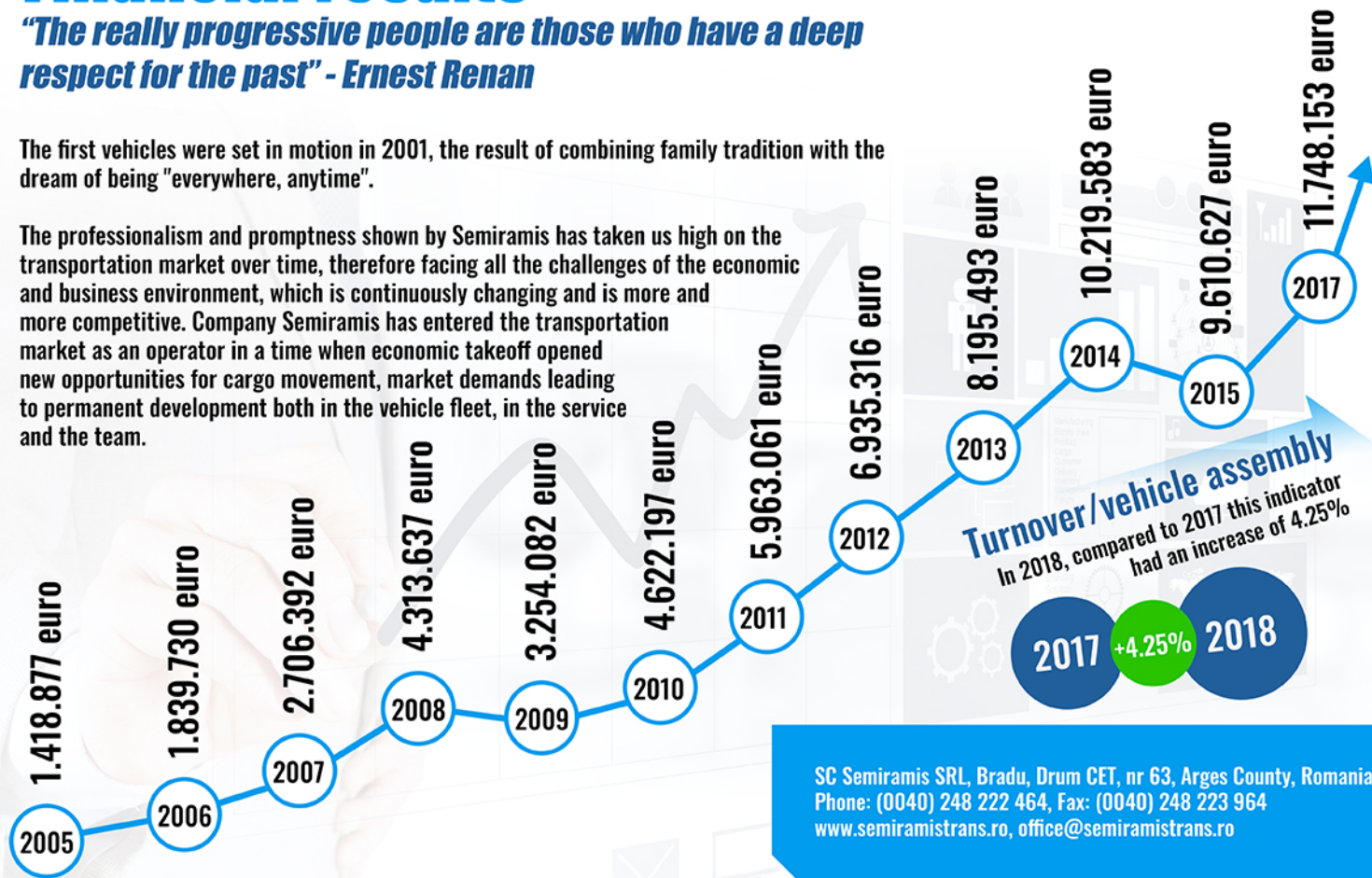


# Financial results

*"The really progressive people are those who have a deep respect for the past" - Ernest Renan*

The first vehicles were set in motion in 2001, the result of combining family tradition with the dream of being "everywhere, anytime".

The professionalism and promptness shown by Semiramis has taken us high on the transportation market over time, therefore facing all the challenges of the economic and business environment, which is continuously changing and is more and more competitive. Company Semiramis has entered the transportation market as an operator in a time when economic takeoff opened new opportunities for cargo movement, market demands leading to permanent development both in the vehicle fleet, in the service and the team.



SC Semiramis SRL, Bradu, Drum CET, nr 63, Arges County, Romania  
Phone: (0040) 248 222 464, Fax: (0040) 248 223 964  
[www.semiramistrans.ro](http://www.semiramistrans.ro), [office@semiramistrans.ro](mailto:office@semiramistrans.ro)

# Our future looks great

*We always look ahead*

## 2019 - 2020

Along this interval, the headquarters of our company will get a **modern appearance**. During 2019 some new, ultra modern premises will host the 150 employees of our company.

Whithin 2019, the ISO 9001:2008 and 14001:2005 certification will be completed.

In order to support our development plans, this year Semiramis will continue consolidating its market position and conquering new segments, taking advantage of new opportunities.

The oldest vehicle will have a maximum of 3 years.



SC Semiramis SRL, Bradu, Drum CET, nr 63, Arges County, Romania  
Phone: (0040) 248 222 464, Fax: (0040) 248 223 964  
[www.semiramistrans.ro](http://www.semiramistrans.ro), [office@semiramistrans.ro](mailto:office@semiramistrans.ro)



# Quality people, quality services

*Committed to quality, delivering results*



## **SC Semiramis SRL**

Brad, Drum CET, nr. 63,  
Arges County, Romania

Phone: (0040) 248 222 464,  
Fax: (0040) 248 223 964  
[www.semiramistrans.ro](http://www.semiramistrans.ro),  
[office@semiramistrans.ro](mailto:office@semiramistrans.ro)